

Siren-Strobe

Before You Begin

The **PSIREN** can be installed in two different ways:

- AC operation with internal DC battery backup
- DC operation with batteries only ("mount anywhere")

Note: For code-compliant outdoor AC operation, the outlet must be in a weatherproof junction box. Follow all proper electrical codes for all outdoor AC installations. Avoid mounting in direct sunlight as this will reduce battery life.



The unit is shipped from the factory as a 120VAC device. Four C-cell alkaline batteries **must always** be installed (not included; see **AC With Battery Backup** instructions, on this page). The **PSIREN** can also be powered with batteries only, thus increasing the number of possible installation locations (see **Battery-Only Operation** on page 17-2). Use one of the two templates in WI2728LF appropriate for the installation. For indoor installations, we recommend the unit be oriented as shown in the image above, but can be installed upside down if needed. When mounting outdoors, the unit must be oriented as shown to maintain moisture resistance. **Note:** Up to three (3) **PSIREN** units are allowed for each Super Panel.

The siren will "learn" AC presence upon first power up; this means that an AC Power Failure trouble will only be reported if the siren is powered by AC and then AC power is lost or if the siren is removed from the wall power socket. In addition, if the siren is powered by AC and the batteries are low (or not installed), a low battery trouble will be reported. **Four 'C'-size batteries (not included) must always be installed for ALL installations** (we recommend using 4 fresh Duracell alkaline batteries; do not mix battery types, or old and new batteries).

An internal tamper circuit is enabled when the external Tamper Mag-

net is installed (the Tamper magnet is secured to the wall; it is not installed on the siren). The tamper feature alerts the Super Panel in the event of unauthorized removal or access to the **PSIREN**. For wall outlet installations, install this provided Tamper Magnet with the double-sided tape (also provided) and do NOT use the screws (DO NOT use screws near electrical wiring that runs inside walls). **Important: We recommend the use of hearing protection should the siren activate during installation or testing.** The Super Panel will "learn" the presence of the **PSIREN** when the Tamper Magnet presence is detected; subsequent separation of the Tamper Magnet from the **PSIREN** will trigger a tamper trouble. **Note:** The Super Panel's integral siren only activates upon an Area 1 alarm. All external **PSIREN** units activate upon an alarm in any Area. **Warning: Do not apply AC power when the PSIREN rear cover is open!**

AC With Battery Backup

For AC installations, be sure to select an un-switched 120VAC wall outlet and ALWAYS install the required four 'C'-size batteries (not included) that provide backup power if AC power fails.

1. Place one of the two templates in WI2728LF over the 120VAC wall outlet socket, carefully aligning the template with the "**Center Line of Wall Socket**". Use a level to ensure horizontal mounting.
2. Mark the location for placement of the **Tamper Magnet**.
3. Use the supplied double-backed tape to secure the **Tamper Magnet** to the wall (do NOT use any screws near electrical wiring that runs inside walls).
4. At the wall outlet, remove the wall cover plate screw (only the screw; keep the cover plate in place). For wall outlets without a center cover plate screw, use the provided metal bracket and template (see following pages for templates; always print templates 1:1 without size adjustments, and measure dimensions on printed templates to verify dimensional correctness).

Siren-Strobe (cont'd)

5. Plug the unit into the wall outlet, being certain the siren housing is placed over the **Tamper Magnet**. The unit powers up*.
6. Secure the unit to the wall outlet by using the single supplied screw (part #SC206LF) and washer provided in the accessory bag to replace the wall cover plate screw removed previously. Insert screw and washer into the **Screw Hole Tab** shown on the template (or the other template used for outlets without a center cover plate screw).
7. Install the **Finisher Plate** to conceal the **Tamper Magnet** (see Fig. 2).

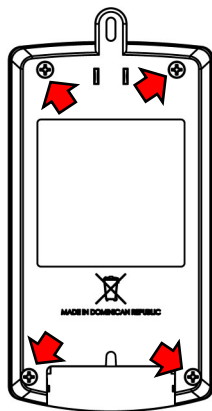


Fig. 1: Rear of the unit



Fig. 2: Finisher Plate

Battery-Only Operation

The weatherproof **PSIREN** can be operated on battery power when mounted in outdoor locations or when an AC outlet is not available. As detailed below, preparing the unit for battery (DC) operation requires opening the unit and replacing the factory-installed **Wall Outlet PCB** with the **Tuning PCB**. **Note:** To ensure moisture resistance, the perimeter gasketing must be properly fitted and the unit mounted vertically (as shown in the image on page 17-1). **WARNING:** For safe installations.

use the supplied mounting hardware and heed all warnings in the section "**Before You Begin**" on page 17-1. Proceed as follows:

1. Place the template on the mounting surface using a level to ensure the template is parallel with the floor.
2. Mark the two holes for the Tamper Magnet and the one hole for the Slide Screw.
3. Heeding the WARNING noted above, secure the Tamper Magnet to the wall using the two screws provided (part #SC596, #6 x 3/4" self-tapping, Phillips flat head, U-cut, steel zinc, Type A).
4. Screw in the provided Slide Screw fully into the wall, then back the screw out 1 turn (part #SC265, #6 x 1/2" self-tapping, Phillips pan head, steel zinc, Type A).
5. Remove the four (4) screws shown in Fig. 1 and carefully pull off the rear housing.
6. Remove the two screws that secure the **Wall Outlet PCB** (see Fig. 3). Unplug and store for future use.
7. On the inside rear housing, insert the **Rubber Gasket** that covers the slots for the **Wall Outlet PCB** prongs (see Fig. 4).

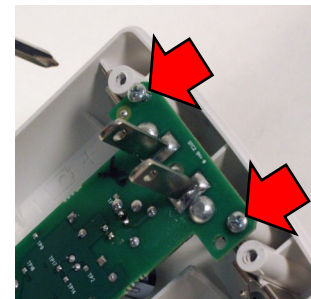


Fig. 3: Two screws securing the "Wall Outlet PCB"



Fig. 4: Rubber Gasket

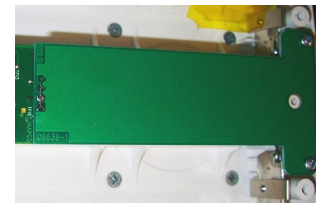


Fig. 5: Tuning PCB

**Every time the siren is powered from an unpowered state, the unit ignores the tamper function until after the siren is placed over the Tamper Magnet. Subsequently, when the normally-closed tamper circuit opens (magnet removed), the siren reports a tamper trouble to the Super Panel.*

Siren-Strobe (cont'd)

8. In place of the removed **Wall Outlet PCB**, install the **Tuning PCB** and secure with the original screws removed in step 6. **Note:** The **Tuning PCB** is needed for antenna tuning to compensate for the removal of the **Wall Outlet PCB**; failure to install this tuning PC board for DC-only operation may result in degraded wireless performance.
9. Install four 'C'-size batteries (observing polarity) and the unit powers up (see *footnote on previous page). We recommend using 4 fresh Duracell alkaline batteries; do not mix battery types, or old and new batteries.
10. Replace the perimeter gasket seal. Secure the rear housing cover with the original four (4) screws shown in Fig. 1.
11. Secure unit to the wall using a screw inserted into the **Screw Hole Tab** shown on the templates. Use a screw appropriate for the electrical box or mounting surface.
12. Install the **Finisher Plate** to conceal the **Tamper Magnet** (see Fig. 2). Pair and test the unit as described in the next section.

Super Panel and PSIREN: Pairing and Testing Steps

Important: We **STRONGLY** recommend the use of hearing protection should the siren activate during the installation or while testing.

1. In the Super Panel **Home** screen, tap the 'triple bar' menu icon located at the top left.
2. Type the Master Passcode.
3. In the **Settings** screen, tap **Devices**, then tap the [+] sign at the top right corner.
4. In the **Add Devices** screen, tap **Siren**.
5. On the Super Panel display, a popup reads, "Please trigger the siren now". Separate the **PSIREN** body from the tamper magnet, then replace the magnet.

6. Ensure the indication "**Triggered**" appears on the Super Panel screen. This completes the **PSIREN** installation.
7. Select the physical location description of the new **PSIREN** from the selections (the screen that appears next allows you time to physically install the siren).
8. After the siren is mounted in the installation location, tap **Done**.
9. Verify a confirmation screen appears (e.g., "Front Entry Siren has been added") and displays the siren in the Group to which it was added. Repeat the above for **PSIREN 2** and **3** if desired.
10. **Required:** You must perform a test of the siren(s) to ensure a secure communication link between the Super Panel and the siren(s). **Before performing the next steps, we strongly recommend the use of hearing protection.**
 - a. In the **Settings** screen, tap **Test**.
 - b. In the **System Test** screen, tap **Siren** and all paired sirens are displayed.
 - c. Tap **Start** and verify all paired sirens sound and flash their strobes; in the popup that appears ("Does it sound loudly?"), tap **Yes**. **Note:** All paired sirens must be tested simultaneously, but note that each paired siren requires each to be individually muted.
 - d. Ensure the siren RF signal strength is "Excellent" or "Good". A "Fair" signal strength (or weaker) is not recommended.

PSIREN Signaling Information

The **PSIREN** generates three types of alarm signals: Fire, CO (carbon monoxide) and Burglary, described as follows. Take the appropriate action upon hearing these alarms.

Fire Alarm:

A fire alarm sounding is a Temporal-Three audio alarm consisting of 3 short beeps followed by a short pause before the repetition of the same beep pattern until the condition is cleared..

Siren-Strobe (cont'd)

CO Alarm:

A carbon monoxide alarm sounding is a Temporal-Four audio alarm consisting of 4 short beeps followed by a pause of about 5 seconds before the repetition of the same beep pattern until the condition is cleared.

Burglary Alarm:

A burglary alarm is a continuous alarm sound without breaks.

Simultaneous Fire, CO and Burglary Alarms

In case of any combination of simultaneous Fire, CO and Burglary alarms, the siren will produce only one audible signal according to the signaling priority:

1. Fire (highest)
2. CO
3. Burglary (lowest)

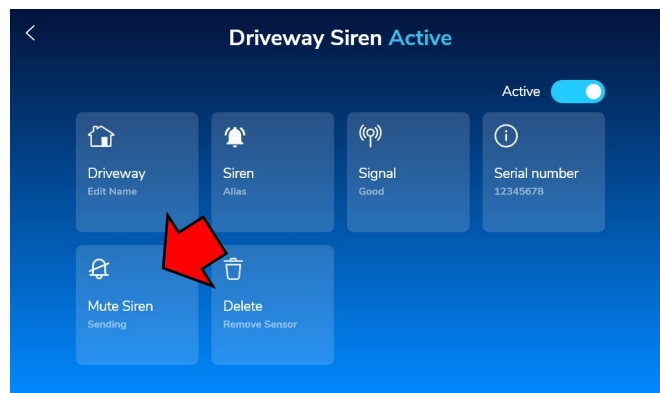
Should simultaneous Fire, CO and Burglary alarms be triggered, Fire takes precedence. If the Fire alarm is then manually silenced at the Super Panel, the siren will then begin sounding a CO cadence until the CO cadence is silenced by the user with their passcode. The continuous Burglary alarm will then sound until manually silenced. **Note:** FIRE and CO are deadly occurrences! DO NOT silence without fully investigating the premises; these signals will reoccur if not addressed correctly. In the event of CO, leave the premises and call the appropriate agency.

Mute Siren

If a siren is sounding and you wish to turn it off, enter your User passcode. If your attempt to turn off the siren with your User

passcode does not succeed, an additional **Mute Siren** feature is available:

1. With the siren sounding, open the Super Panel **Home** screen and select the 'triple bar' menu icon located at the top left.
2. Enter the Master Passcode.
3. In the **Settings** screen, tap **Devices**.
4. In the **Groups** section, select **Siren Group** and select the active siren that you wish to mute. The following screen, for example, displays the several buttons that appear, including the **Mute Siren** button:



5. Select **Mute Siren** to send a mute command from the Super Panel to the selected siren. A "**Mute Siren Sending**" popup appears. If the siren has been muted, select **OK**. Note that if you do not select **OK**, the Super Panel will continue sending a mute command to the siren for one minute.

Siren-Strobe (cont'd)

Specifications -- Siren-Strobe (Model PSIREN)

Input Power	120VAC and/or four (4) 'C'-size batteries (Important: Batteries must always be installed for AC backup installation). We recommend using Duracell alkaline; never use less than 4 fresh batteries and do not mix battery types, and do not mix old and new batteries. See " Weather Proofing ", below.
Input Current (120VAC)	1.60mA standby current; 3.26mA when siren active
Operating Temperature	32° to 120.2°F (0° to 49°C)
Relative Humidity (Storage)	85% Max. non-condensing
Weather Proofing	For code-compliant outdoor AC operation, the outlet must be in a weatherproof junction box. For outdoor operation, note the temperature range in " Operating Temperature ", above.
Dimensions (W x H x D)	3.5 x 6.75 x 2.5 in. (8.9 x 17.1 x 6.4cm)